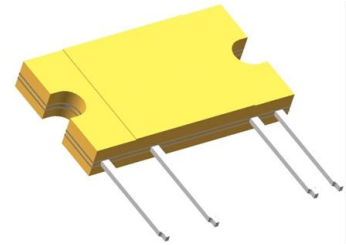


YAS2/D2Z22——2A 700V SSR

概述 Features

- 厚度3.0mm SSR Thickness 3.0mm SSR
- 过零型 Zero-cross
- 负载电流至2A Load current up to 2A
- 阻断电压700V Repetitive peak off-state voltage 700V
- 介质耐压3000V Dielectric strength 3000V
- 符合RoHS RoHS compliant



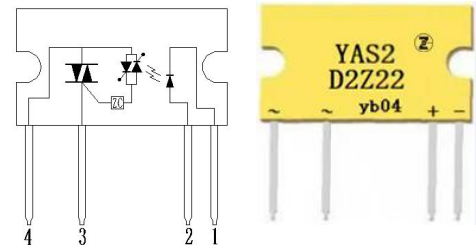
获得认证 Agency approvals

- UL - E481250
- cUL - E481250

应用 Applications

- 家电产品（空调、冰箱、洗衣机、微波炉、卫浴等）
Home appliances (air conditioners, refrigerators, washing machines, microwave ovens, personal hygiene product etc.)

- LED灯控制 LED control
- 工业控制 Industrial control



打印标志 Marking information

Part number	Package	Marking
YAS2/D2Z22	SIP4	YAS2 D2Z22

极限值 Absolute maximum ratings

(Ta=25°C)

特性参数/Parameter		符号/Symbol	测试条件/Test condition	最小值/Min.	典型值/Typ.	最大值/Max.	单位/Unit
输入端/Input	LED 反向电流/LED reverse current	V_R		6			V
	LED 正向电流/LED forward current	I_F				50	mA
输出端/Output	阻断电压/Repetitive peak off-state voltage	V_{DRM}/V_{RRM}		700			V
	额定电流/On-state RMS current	$I_{T(RMS)}$	$I_{in}=10mA$			2	A
	浪涌电流/Surge current	I_{TSM}	50Hz, 1 cycle		30		A
介质耐压/ I/O Dielectric strength *		V_{ISO}	$I_{ISO} \leq 0.3mA$	3000			V_{rms}
工作温度/Operating temperature		T_{opr}		-30		85	°C
储存温度/Storage temperature		T_{stg}		-40		125	°C

“*”：RH=40 to 60%, T=20~30°C, AC for 1minute.

电参数 Electrical parameters

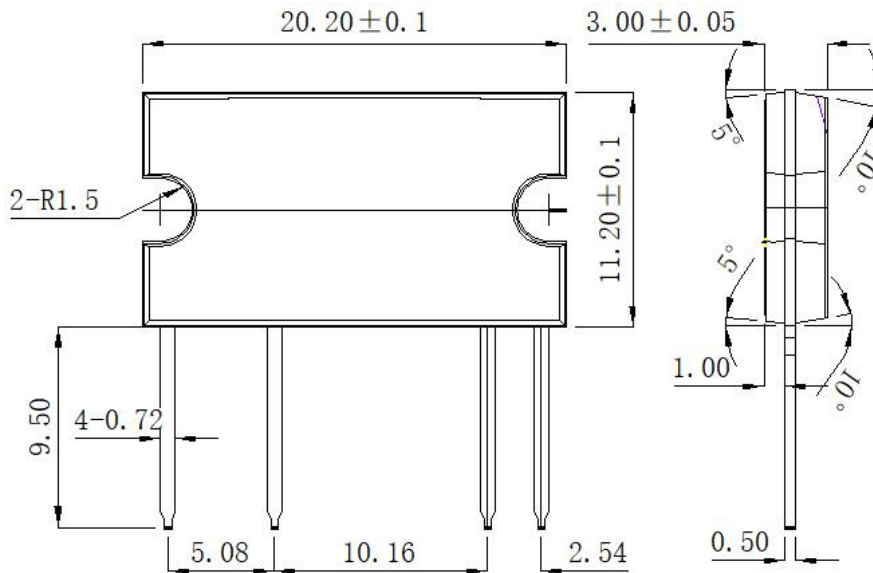
特性参数/Parameter		符号 /Symbol	测试条件 /Test condition	最小 值 /Min.	典型值 /Typ.	最大值 /Max.	单位 /Unit
输入端/Input	LED 正向电压 /LED forward voltage	V_F	$I_F=10mA$		1.2	1.3	V
	LED 反向电流/LED reverse current	I_R	$V_R=5V$			10	μA
输出端/Output	断态泄漏电流/Output off-state leakage current	I_{DRM}	$V_{DRM}=700V$			10	μA
	断态泄漏电流/Output off-state leakage current	I_{RRM}	$V_{RRM}=700V$			10	μA
	负载电压/Load voltage	V_{ac}		48		264	V
	电压指数上升率 /Critical rate of rise of off-state voltage	dv/dt	$V_{DRM}=600V*1/\sqrt{2}$	200			$V/\mu s$
	最小负载电流/Min. load current	I		100			mA
耦合特性 /Transfer characteristics	LED 触发电流/LED trigger current	I_{FT}			3	8	mA
	推荐的工作电流 /Recommend operating current	I_{in}		10		18	mA
	关断电压/ Must release voltage	V_{off}		1.2			V
	导通电压降/Output on-state voltage drop	V_T	$I_{in}=10mA, I_L=2A$ $V_D=6V$		1.2	1.5	V
	过零电压/ Zero-cross voltage	V_{zc}	$I_{in}=10mA,$ $I_L=1200mA$ $V_D=6V$		15	30	V
	导通时间/Turn on time	T_{on}	$I_{in}=10mA,$ $V_D=6V, R_L=100\Omega$			1+1/2cycle	ms
	关断时间/Turn off time	T_{off}	$I_{in}=10mA,$ $V_D=6V, R_L=100\Omega$			1+1/2cycle	ms

安规要求 Safety and insulation ratings:

爬电距离	Creepage distance: 4.3mm, CTI \geq 275;
瞬时过电压	Highest allowable overvoltage 4000V;
再现峰值电压	V_{IORM} 769V;
局部放电	Partial discharge test voltage: 方法 b Method b, $V_{pd} = V_{IORM} \times 1.6$ 1230V.

外形尺寸 Outline dimension :mm

1、SIP4



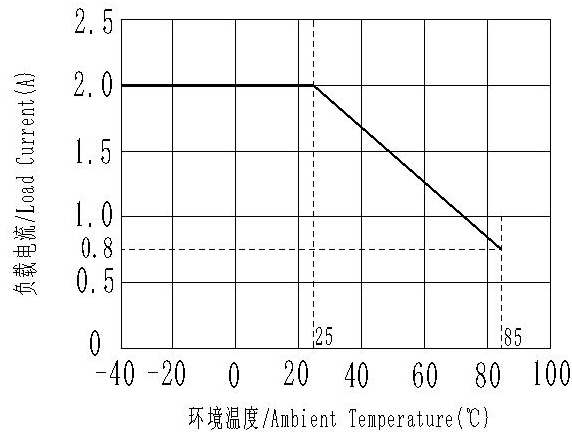
订货信息 Ordering information

订货信息/Ordering information							
	Y	AS	2/	D	2	Z	22
公司商标代号 Company symbol							
交流输出型 AC SSR							
封装 Package: 2: SIP4							
输入端电流型 Current driving: D							
负载电流 Load current: 1-1A;1.2-1.2A;2-2A							
P:调相型 Non zero-cross Z:过零型 Zero-cross							
负载电压 Load voltage: 22:220Vac;38:380Vac							

特性曲线 Characteristic data

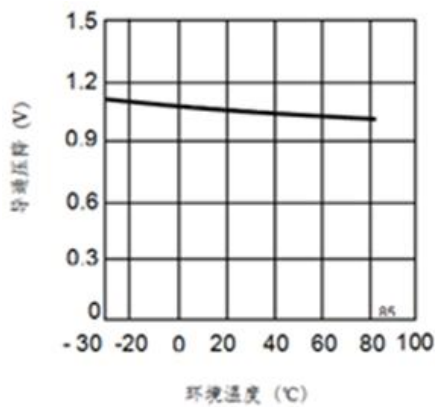
1. 负载电流与环境温度关系曲线

Load current VS. ambient temperature



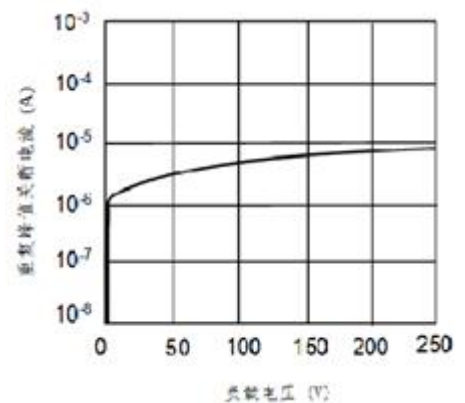
2. 导通压降—环境温度特性

On-state voltage drop VS. ambient temperature



3. 重复峰值关断电流—负载电压

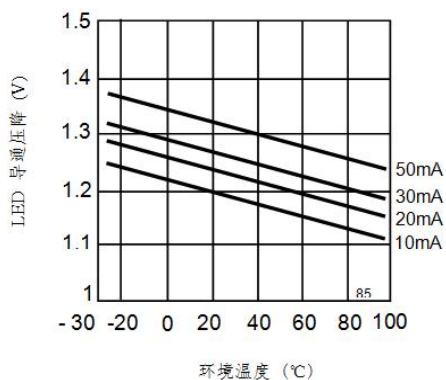
Repetitive peak turn off current—Load voltage



4. LED 导通压降—环境温度特性

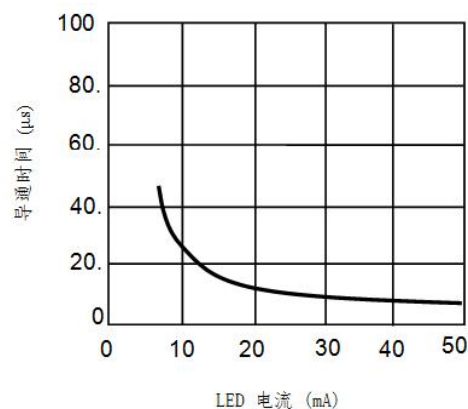
LED dropout voltage vs. ambient temperature

LED current: 10 to 50 mA

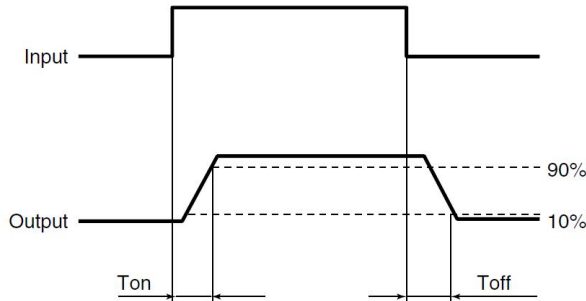


5. 导通时间—LED 电流特性

Turn on time vs. LED current

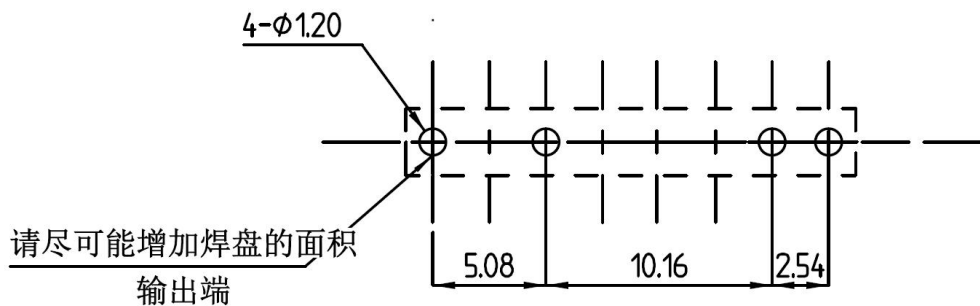


接通和关断时间关系 Turn on and turn off time



安装孔尺寸图 Fixing layout

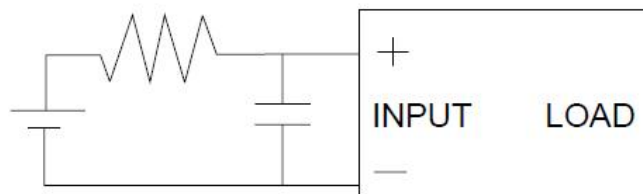
Unit:mm



Please enlarge the solder pads of output.

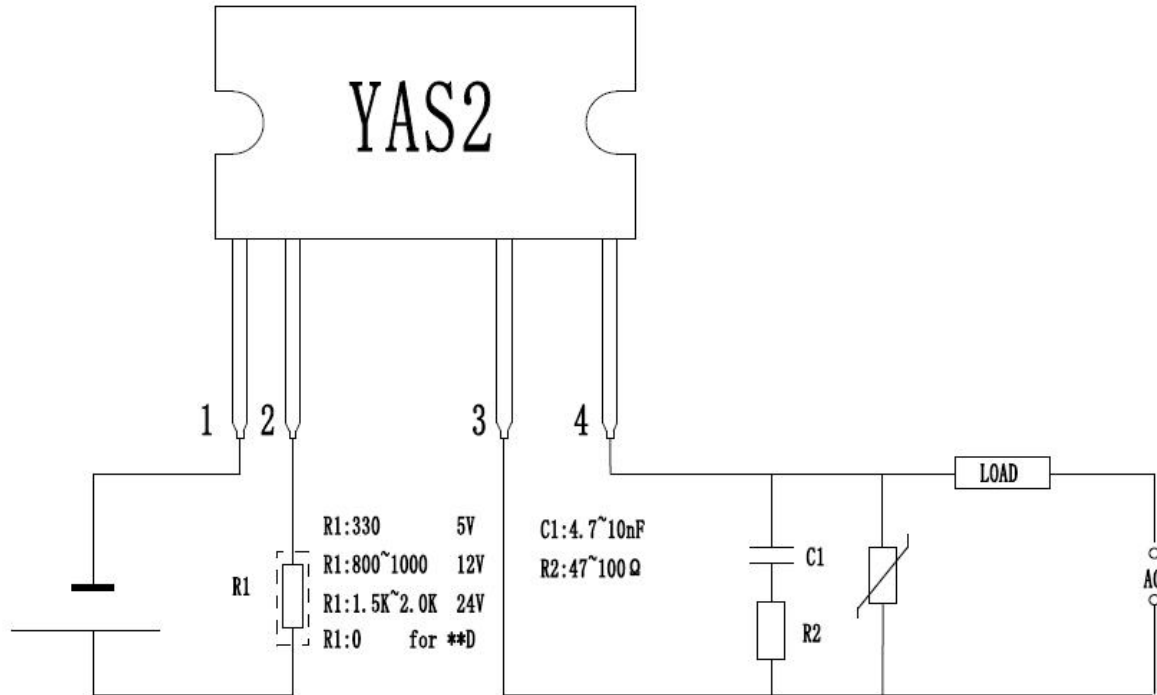
注意事项 Notes

- 工作环境温度超过 25℃ 时请降额使用。参见特性曲线。
When ambient temperature is above 25℃, the load current must be reduced. (see characteristic data)
- 继电器接线时, 务必保证输入端极性的正确, 以免损坏继电器。
Ensuring the polarity is correct when connecting the input lines, otherwise the wrong connection will damage the relay.
- 由于 SSR 动作时间很短, 输入端的噪声可能会引起 SSR 误动作, 所以在输入端环境噪声较大时, 应在输入端接 R/C 回路吸收噪声。
Since the operate time of the relay is extremely short, any noise to input terminal will cause malfunction of the SSR, So a RC circuit should be connected to input terminal to absorb the noise in the noisy condition.



d) 推荐的使用电路，输出端的尖峰电压可能会引起 SSR 误动作，所以请在输出端应加 R/C 回路或压敏电阻吸收尖峰电压，具体见下图：

Below shows a recommend circuit: Please add a RC circuit or varistor on the load side, as noise/surge could damage the unit or cause malfunctions.



关于防静电对策 Cautions for static electricity

- 使用电烙铁时，对电烙铁前端进行接地。(建议使用低电压用的电烙铁。) When using soldering irons, either use irons with low leakage current, or ground the tip of the soldering iron. (Use of low-voltage soldering irons is also recommended.)
- 组装时使用的设备等也应正确地接地。 Devices and equipment used in assembly should also be grounded.

关于焊接 Soldering

继电器焊接,260 度情况下焊接时间不能超过 10 秒钟,350 度情况下焊接时间不能超过 5 秒钟。
Soldering must be completed within 10 seconds at 260°C or within 5 seconds at 350°C.